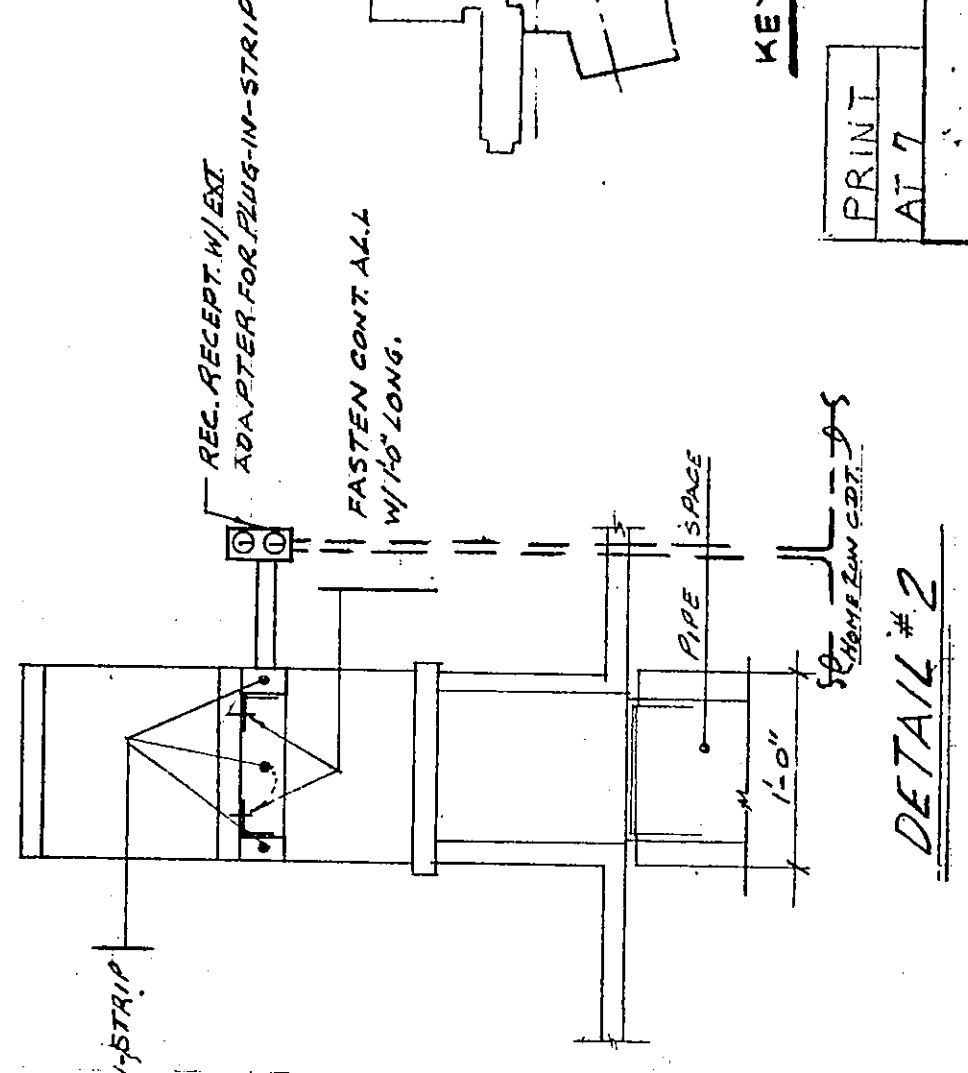
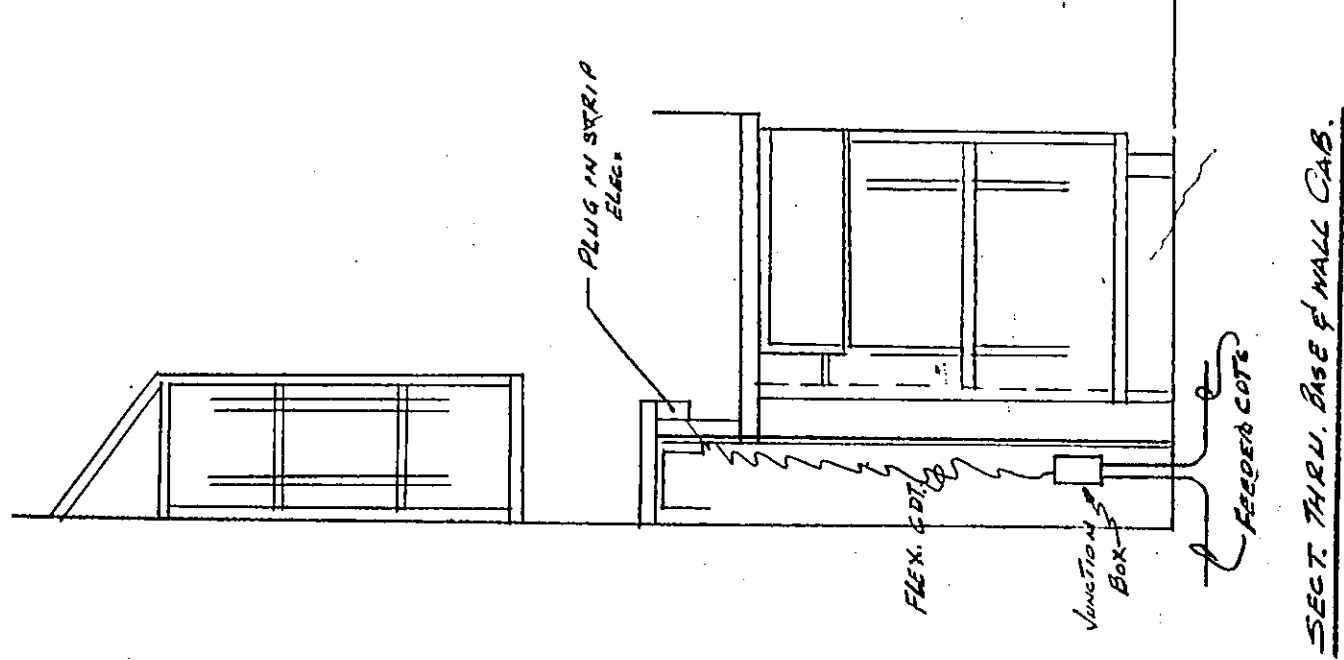


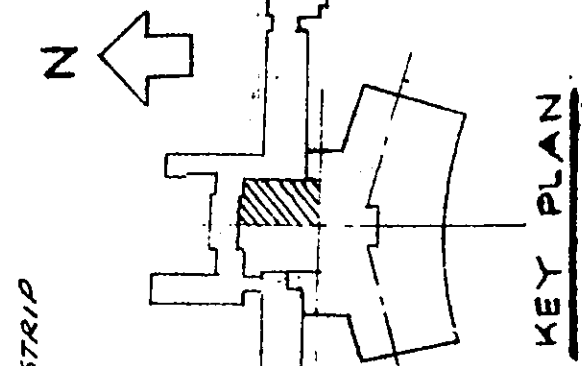
**NOTES**

1. ELECTRICAL CONTRACTOR SHALL INSTALL (1) 200V, 14' 20A SINGLE RECEPTACLE IN PLUG-IN STRIP, ALL OTHER RECEPTACLES SHALL BE WIRED ALTERNATELY TO 120V CIRCUITS, AS INDICATED.
2. ELECTRICAL CONTRACTOR SHALL INSTALL (1) 120V, 20A SINGLE RECEPTACLE IN PLUG-IN STRIP, ALL OTHER RECEPTACLES SHALL BE WIRED ALTERNATELY TO 120V CIRCUITS, AS INDICATED.
3. CONNECT TO NEAREST CLG. OUTLET ON EMERGENCY CIRCUIT.
4. JUNCTION BOX IN CLG. CONNECTED TO PNEUMATIC SYSTEM. DEVICES AS REQUIRED.
5. TERMINATE IN G.C. WITH INSULATED BRASS BUSHING & ALUMINUM W.C. FOR WIRE INSULATION.
6. TERMINATE IN G.C. WITH INSULATED BRASS BUSHING & ALUMINUM W.C. FOR WIRE INSULATION. LOCATION OF BUSHING SHALL BE IN CONFORMANCE WITH NATIONAL ELECTRICAL CODE AS DIRECTED BY ARCHITECT.



AS BUILT DWGS.

DATE 3-10-76



DWG: BMC-18	MEADOWBROOK HOSPITAL	GROUND FLOOR	AREA
	TOWN OF HEMPSTEAD	POWER	#
	NASSAU COUNTY	PROJECT NO.	5-729
		DRAWN BY	W.P. [unclear]
		CHECKED BY	[unclear]
		SCALE	AS SHOWN

THE OFFICE OF MAX O. URBACH ARCHITECTS 442 FIFTH AVENUE NEW YORK, N.Y. 10018	
PERIODT BLUM YERKELMAN	PERIODT BLUM YERKELMAN
PERIODT BLUM YERKELMAN	PERIODT BLUM YERKELMAN

REV. NO.	REVISION	DATE

